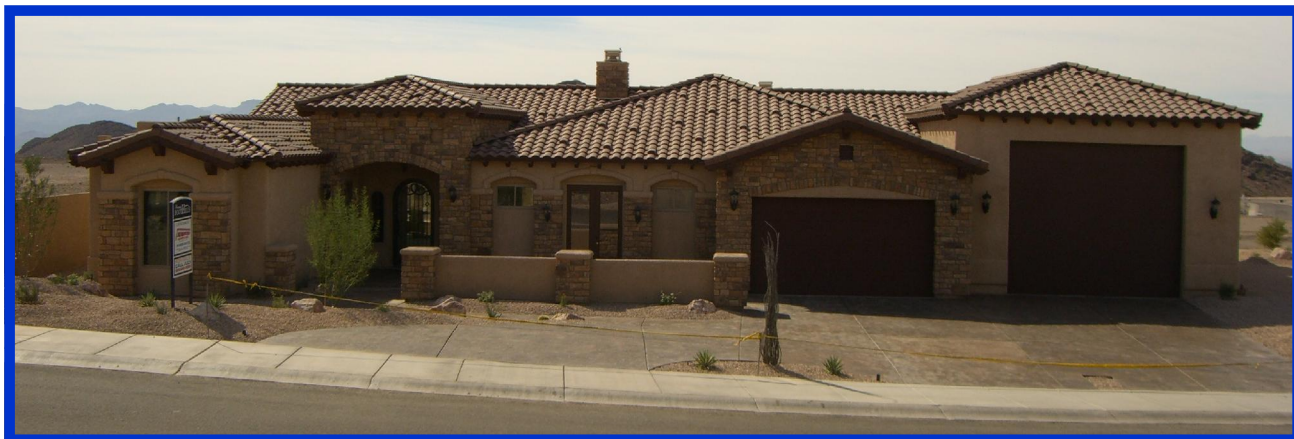


PRESENTS  
THE



# FLORENCIA DUE' ©

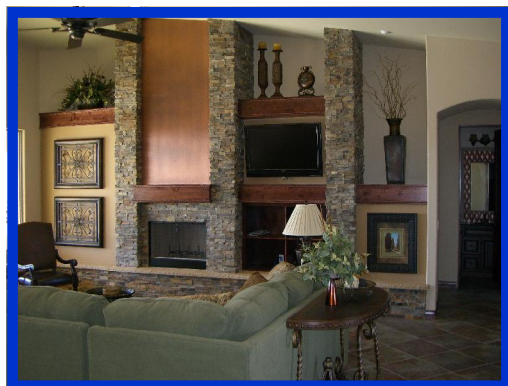
MODEL



THIS ELEGANT TUSCAN STYLE  
DESIGN, FEATURES THE FOLLOWING:

3260 (approx.) SQ. FT. LIVING AREA

3 BEDROOMS, 2 1/2 BATHS, 3 CAR GARAGE & DOUBLE RV GARAGE



- \* STONE VENEER EXTERIOR ACCENTS,
- \* ENTRY COURTYARD,
- \* REC-ROOM WITH BAR,
- \* TILE FLOORING, BATH & SHOWER SURROUNDS,
- \* GRANITE COUNTERTOPS,
- \* STONE FIREPLACE & ENTERTAINMENT CENTER,
- \* PROFESSIONAL GRADE WOLF & SUB-ZERO APPLIANCES,
- \* *and much, much, more...*

**(928) 855-6370**

CIRCULA DE HACIENDA

In the HAVASU FOOTHILLS

[www.advancedhomesinc.com](http://www.advancedhomesinc.com)

**\$749,900.00**

BASE PRICE of HOUSE  
With 3-CAR GARAGE  
ON YOUR PREPARED LOT

\$849,900.00

With RV Garage

ALL PRICES QUOTED ARE ON THE BUYER'S PREPARED LOT. LANDSCAPING, BLOCK WALLS, FENCING, WINDOW TREATMENTS, AND OTHER FURNISHINGS OR FINISHES INCORPORATED FOR THE DISPLAY AND SHOW OF THE MODEL ARE NOT INCLUDED. ALL PRICING AND SPECIFICATIONS ARE SUBJECT TO CHANGE WITHOUT NOTICE. BUILDER RESERVES THE RIGHT TO MINOR SUBSTITUTIONS AND ALTERATIONS DUE TO AVAILABILITY AND CONDITIONS. ALL DIMENSIONS ARE APPROXIMATE AND SALE PRICE INCLUDES SALES TAX. NO REPRODUCTION OR OTHER USE OF THIS PLAN MAY BE MADE WITHOUT THE WRITTEN CONSENT OF THE COPYRIGHT HOLDER.

COPYRIGHT BY ADVANCED HOMES, INC. 2007 ©

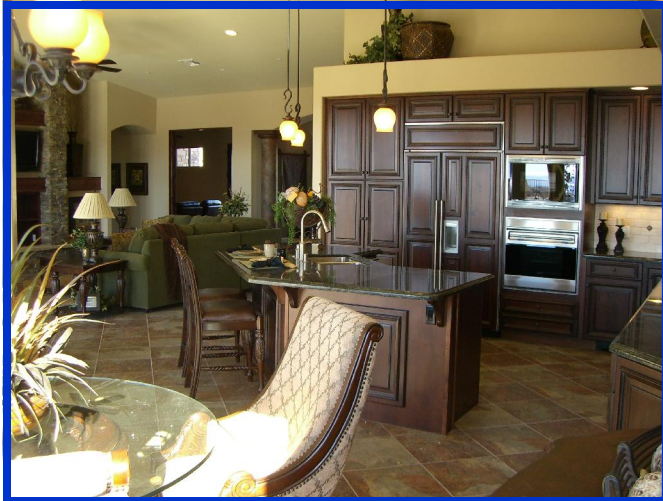
THE  
**FLORENCIA DUE'**

MODEL

Approx. 3260 SQ. FT.

**SOME ADDITIONAL FEATURES:**

- SPACIOUS KITCHEN with SWING-OUT PANTRY, KITCHEN ISLAND/ BAR AREA & DINING NOOK
- KITCHEN POT SHELVING
- 2-CAR GARAGE & DOUBLE RV GARAGE
- 8' TALL KNOTTY ALDER DOORS
- 10' HIGH CEILINGS with VAULTED AND/OR COFFERED CEILINGS THROUGHOUT
- DARK MAPLE, SOLID WOOD, RAISED PANEL DOOR & FACE FRAME CABINETRY
- PATIO ACCESS FROM THE LIVING/ KITCHEN AREA and MASTER BEDROOM
- TWO SIDED MASTER BEDROOM FIREPLACE
- MORNING/COFFEE BAR IN MASTER BEDROOM
- "CLASSY CLOSET" SYSTEM IN BEDROOM CLOSETS
- LARGE UTILITY ROOM WITH LAUNDRY SINK, CABINETS AND FOLDING TOP
- SHELTERED PATIO UNDER MAIN



*"I will be happy to sit down with you to go over all aspects of my construction materials, methods, procedures and experience, as well as provide you with a detailed list of the items included in this fine home."*

*Sincerely,*

*Jim Harris,*

*President*

**ADVANCED  
HOMES, INC.**



P. O. BOX 145  
LAKE HAVASU CITY, AZ 86405

[www.advancedhomesinc.com](http://www.advancedhomesinc.com)

**(928) 855-6370**

